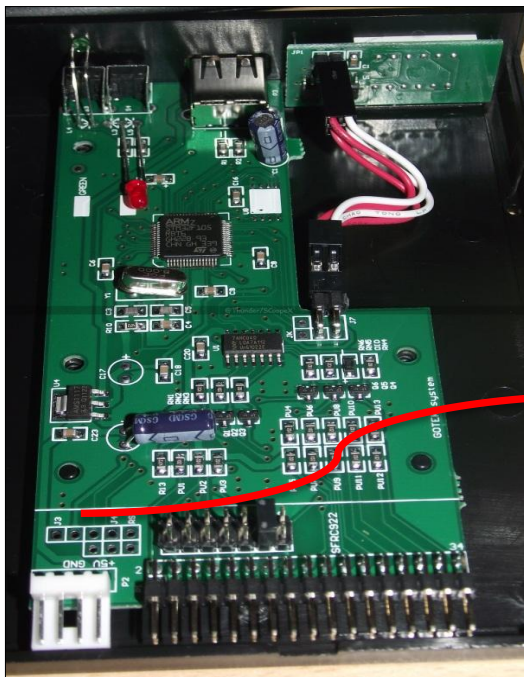
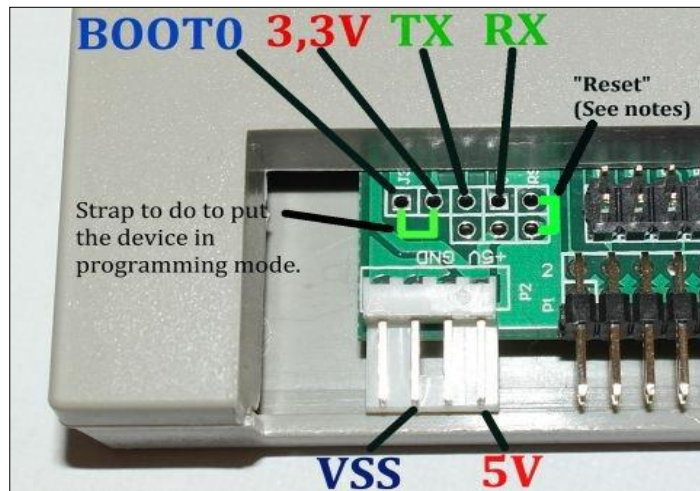
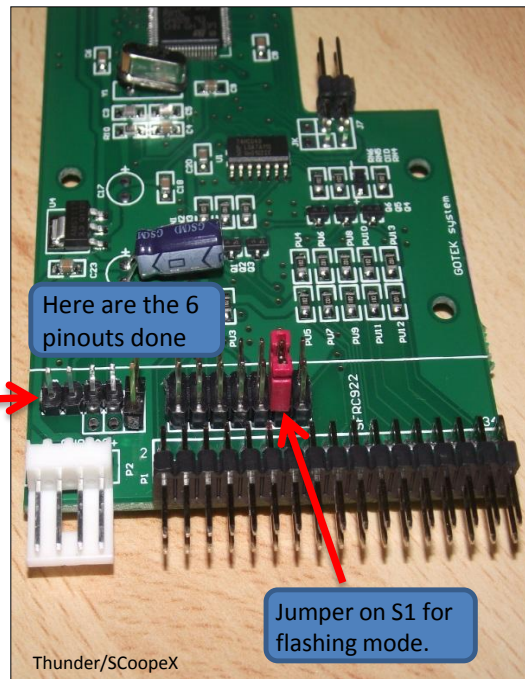


Gotek Amiga Floppy Emulator

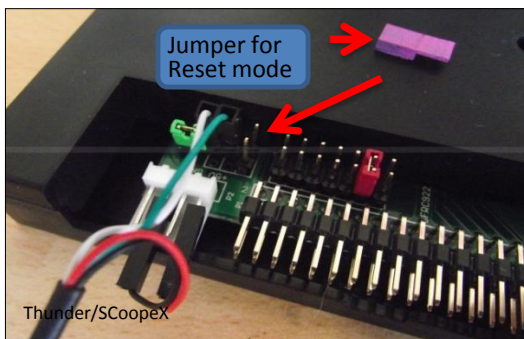
Tech. translation by Thunder/SCoopeX
6 pinout installation



ToDo : 6 pinouts soldering on the PCB.

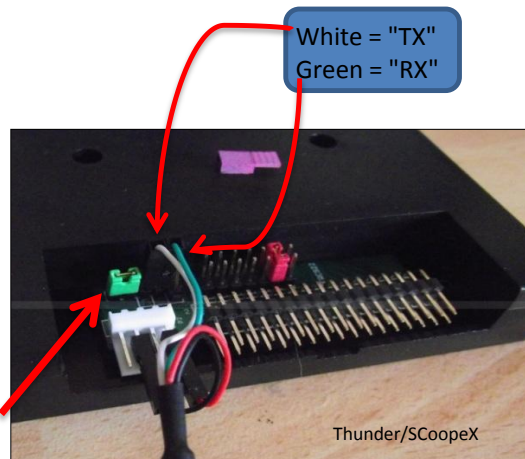


Jumper on S1 to enable flashing



Reset Jumper must stay ON while flashing

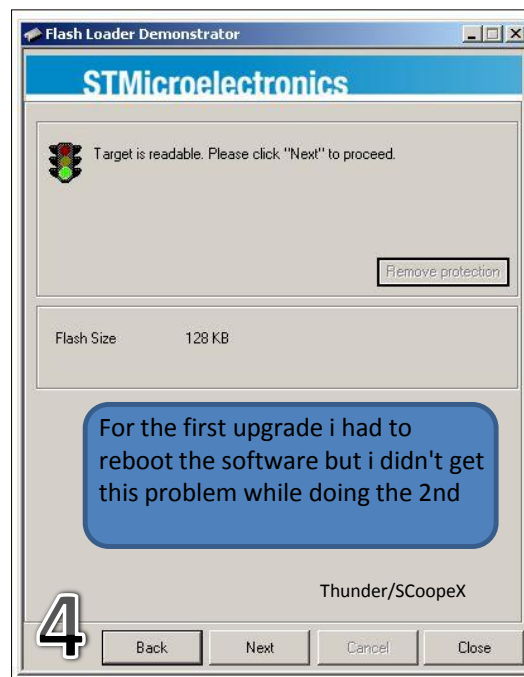
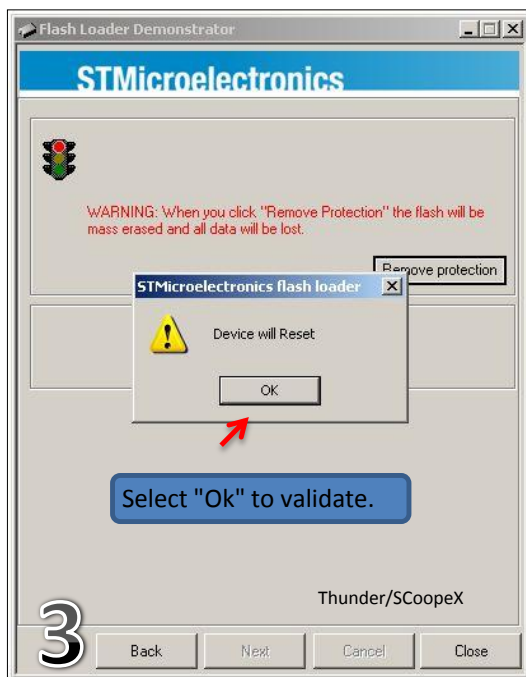
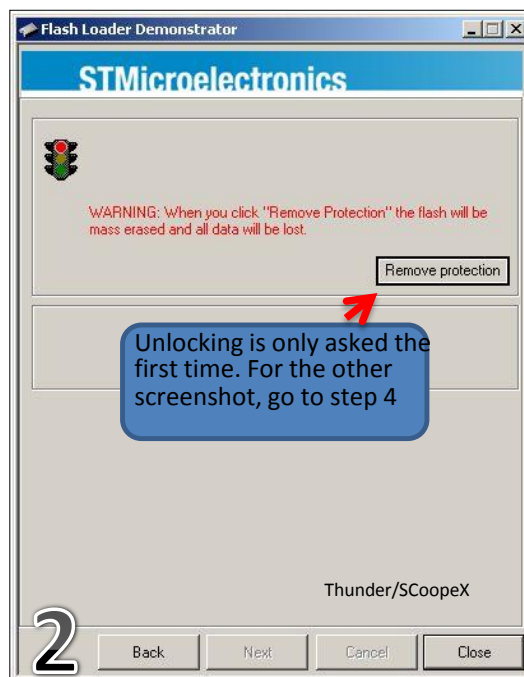
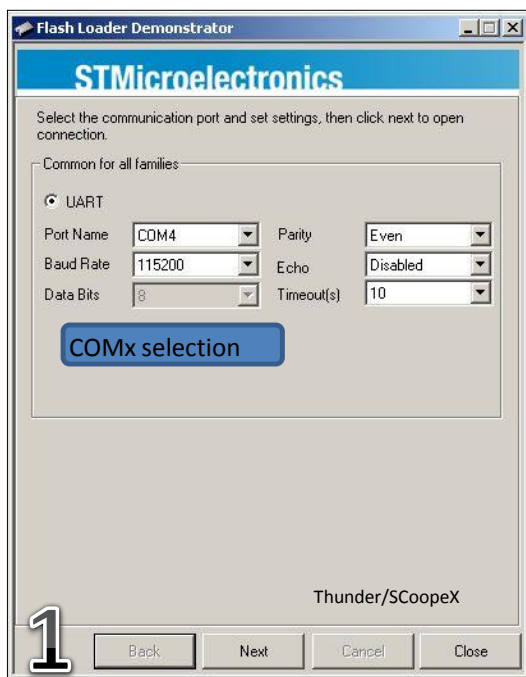
Jumper must be enable for the flashing

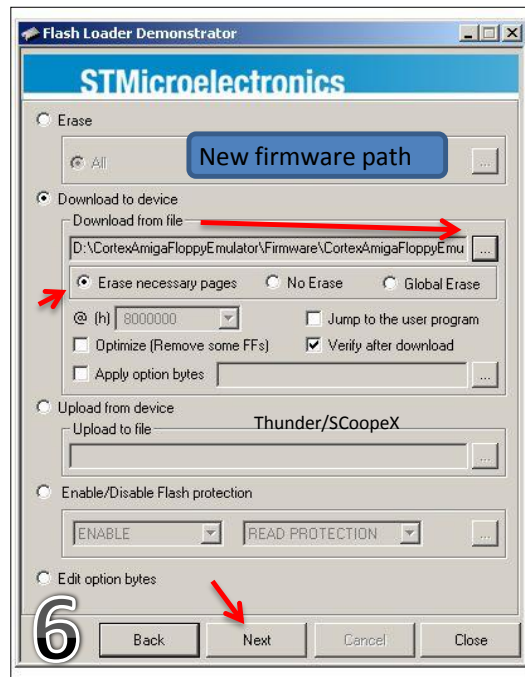
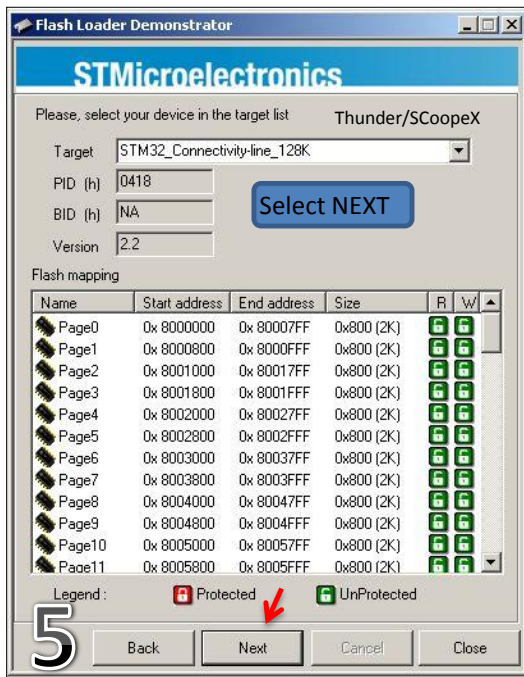


This screen may appear at step 1 after selecting "COMx" mode. Meaning the drive isn't recognize.

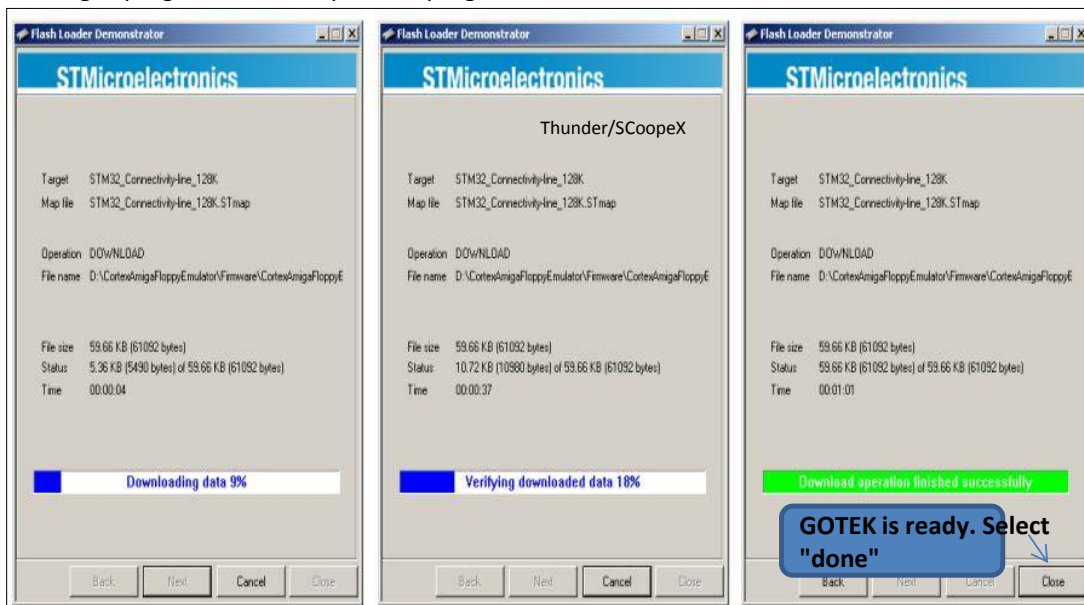
Take a jumper and install it on the 2 RESET pinouts right after.
It must be done while the drive in powered on.







Flashing in progress / Driver Update in progress...



Your Gotek drive now rulez !

